

ATTWM8G8.ai

OUTSIDE

PANTONE Warm Gray 2 CVC

PANTONE 410 CVC

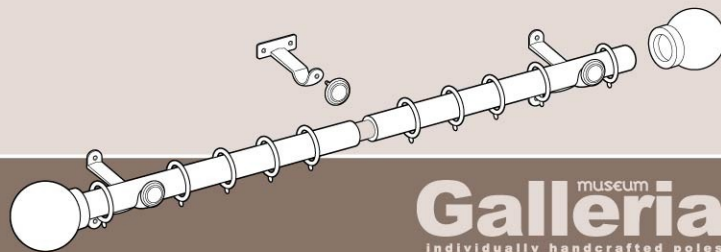
BLACK

Bracket fixings suitable for solid walls only, consult a specialist if you have any queries.
DO NOT place in damp conditions (i.e. bathrooms). Tighten all finials onto the poles securely before locating the pole onto the wall brackets

MAX WEIGHT CURTAIN POLES WILL HOLD:
Metal: 35mm dia - 35lb, 50mm dia - 55lb.

Hallis Hudson Group Ltd, Unit B1, PR2 5NJ

35mm 50mm



INSIDE

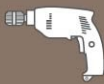
ADDITIONAL TOOLS REQUIRED



Positive Screwdriver



6mm Drill Bit



Drill



Spirit Level



Pencil

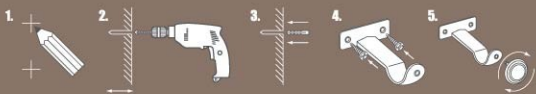


Ruler

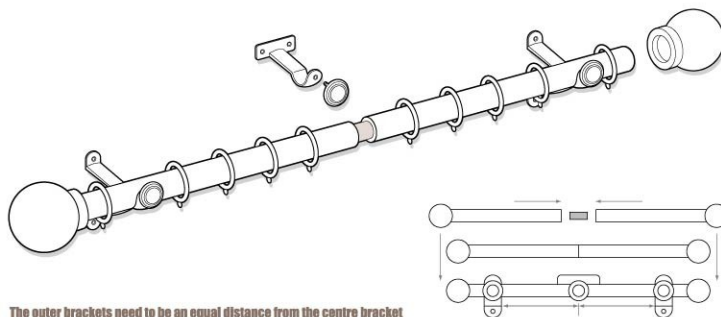


Saw

FIXING INSTRUCTIONS



1. Mark the position for your brackets
2. Drill holes with the 6mm drill bit
3. Insert plug screws
4. Screw brackets to the wall
5. Screw on bracket front



The outer brackets need to be an equal distance from the centre bracket

210 mm