

RINGS ONLY

Rings (pack of 6)



	19mm	28mm	35mm
Stainless Steel Effect	7334R	Stainless Steel Effect 1608R	Stainless Steel Effect 2196R
Spun Brass Effect	7336R	Spun Brass Effect 1609R	Spun Brass Effect 2504R
Black Nickel Effect	1685R	Black Nickel Effect 2177R	Black Nickel Effect 2548R
Chrome	1667R	Chrome 2157R	Chrome 2521R

'C' Rings (pack of 6) only for use with cylinder brackets



	19mm	28mm	35mm
Stainless Steel Effect	7345R	Stainless Steel Effect 1620R	Stainless Steel Effect 2200R
Spun Brass Effect	7346R	Spun Brass Effect 1621R	Spun Brass Effect 2508R
Black Nickel Effect	1689R	Black Nickel Effect 2183R	Black Nickel Effect 2552R
Chrome	1671R	Chrome 2163R	Chrome 2535R

JOINERS & CORNER JOINTS ONLY

Joiner (single)

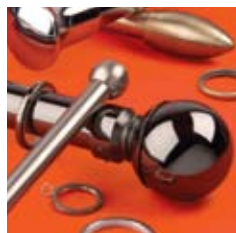


	19mm (length 98mm)	28mm (length 120mm)	35mm (length 120mm)
One Colour	1661R	One Colour 2135R	One Colour 2208R

Bay Corner Joint (single)



	19mm	28mm	35mm
Stainless Steel Effect	7340R	Stainless Steel Effect 1610R	Stainless Steel Effect 2197R
Spun Brass Effect	7342R	Spun Brass Effect 1611R	Spun Brass Effect 2505R
Black Nickel Effect	1687R	Black Nickel Effect 2178R	Black Nickel Effect 2549R
Chrome	1669R	Chrome 2158R	Chrome 2522R



neo

Ref: 001022 01 09 10

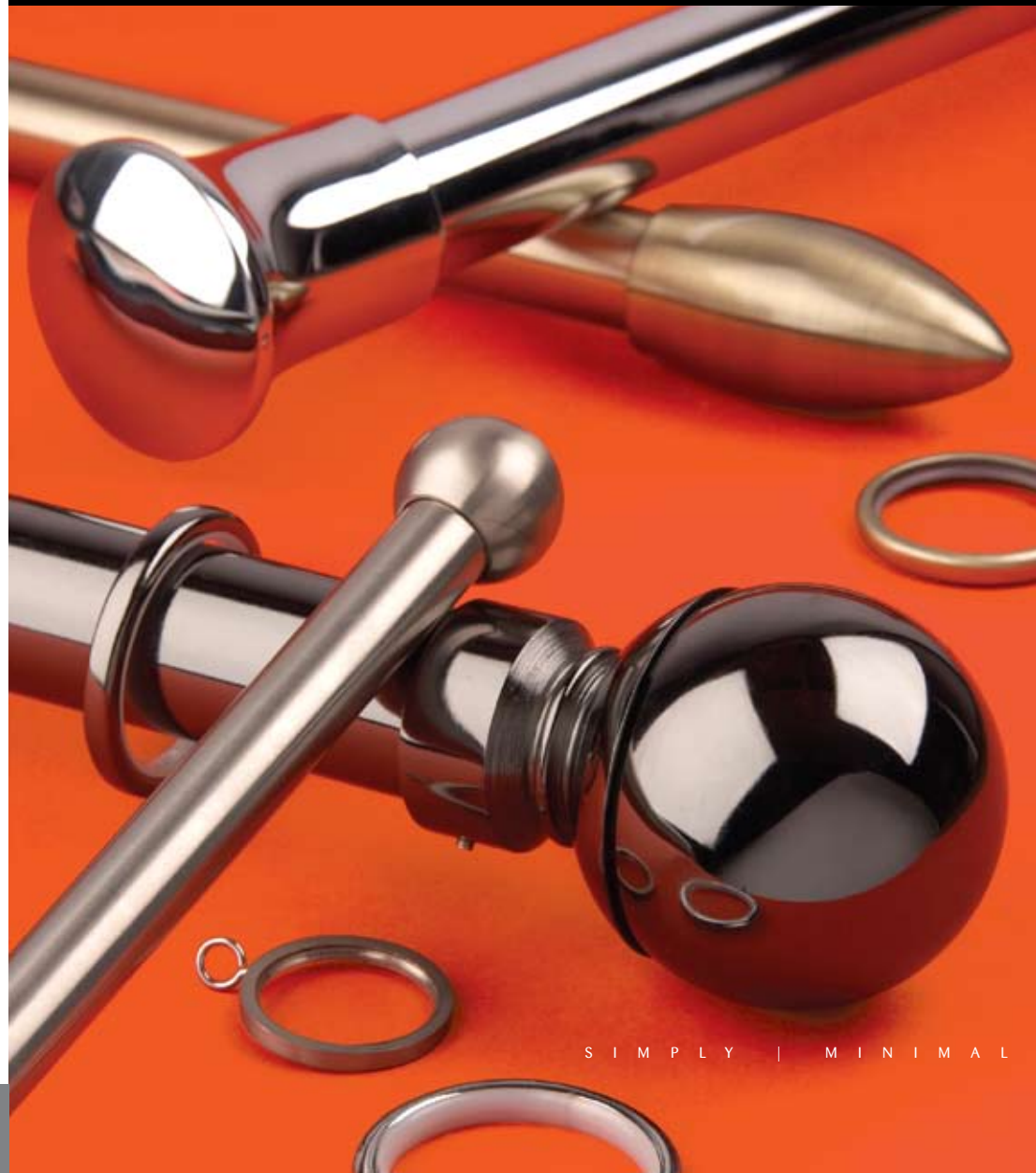
— HALLIS HUDSON —

Hallis Hudson Group Ltd, Unit B1, Red Scar Business Park, Preston, Lancashire PR2 5NJ

ROLLS

neo

19mm / 28mm / 35mm diameter
METAL POLES



SIMPLY | MINIMAL

NEO IS AN AFFORDABLE RANGE OF SIMPLY MINIMAL METAL CURTAIN POLES AND CO-ORDINATED ACCESSORIES REFLECTING THE DESIRE FOR SLEEK DESIGN IN THE MODERN HOME.



Black Nickel Effect



Chrome Effect



Spun Brass Effect

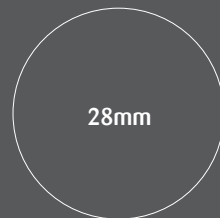


Stainless Steel Effect

THE 19MM, 28MM & 35MM RANGES ARE AVAILABLE IN FOUR CONTEMPORARY METAL FINISHES WITH A CHOICE OF FOUR FINIAL DESIGNS IN EACH DIAMETER.



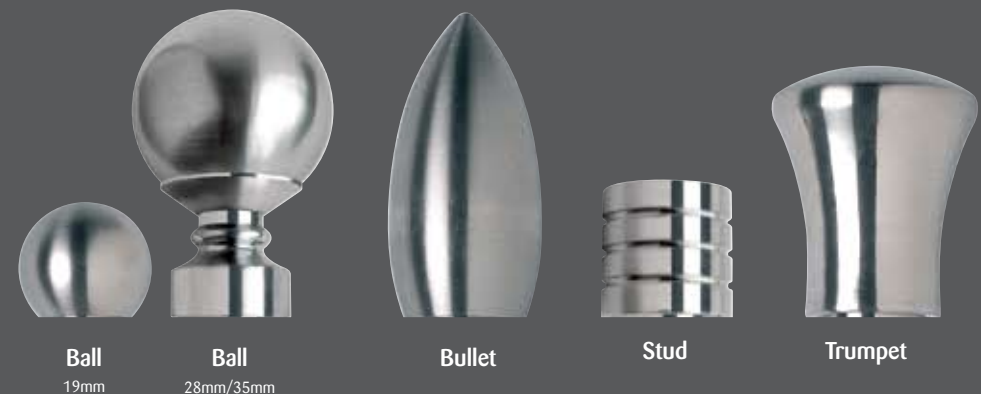
19mm



28mm



35mm

Ball
19mmBall
28mm/35mm

Bullet

Stud

Trumpet

THE QUALITY OF THE METAL AND THE ATTENTION TO DETAIL IN THE FITTINGS MAKE NEO A PLEASURE TO INSTALL AND USE.



NEO POLES ARE MADE FROM HEAVY GAUGE METAL; THE STAINLESS STEEL EFFECT POLE USES A REAL STAINLESS STEEL FOIL AND THE OTHER FINISHES ARE ELECTRO-PLATED MAKING THEM MORE DURABLE AND LESS PRONE TO CHIPPING.

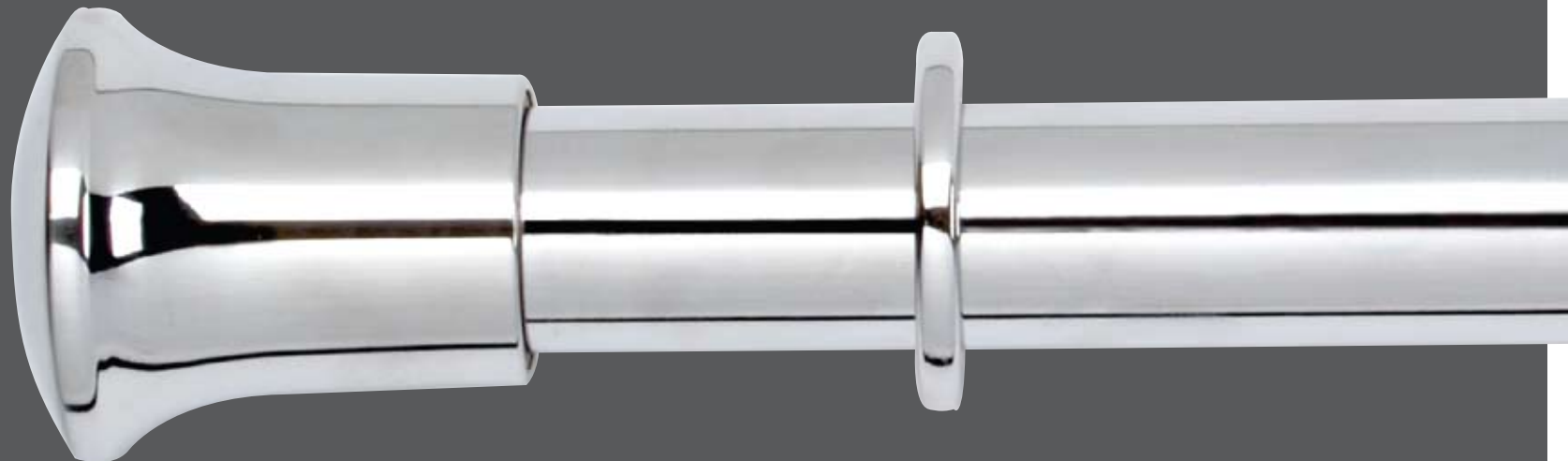


Quality Rings:

The solid, fixed eyelet, metal rings are lined with nylon so that they run quietly and smoothly.

Quality Brackets:

The brackets shown, are solid cast. The extendable cup bracket (available in 28mm only) shown, enables the pole to be fixed to uneven points on your wall.



19mm

COMPLETE PACK

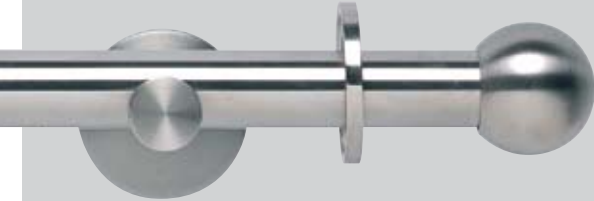
THE COMPLETE PACK
INCLUDES EVERYTHING YOU NEED
TO INSTALL YOUR CURTAIN POLE,
INCLUDING BRACKETS AND RINGS.

Size (cm)			
120	180	240	300



19mm pole suitable for light and medium weight curtains up to 11kgs

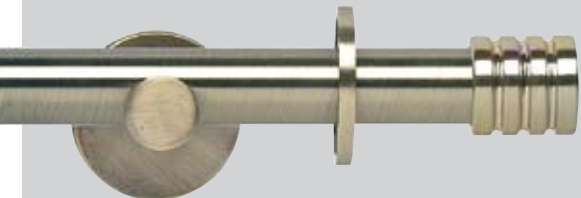
Comes with Cylinder Bracket



Ball (Shown in Stainless Steel)
Stainless Steel Effect **7100R/Size**
Spun Brass Effect **7102R/Size**
Chrome Effect **1662R/Size**
Black Nickel Effect **1680R/Size**



Bullet (Shown in Black Nickel)
Stainless Steel Effect **7106R/Size**
Spun Brass Effect **7108R/Size**
Chrome Effect **1664R/Size**
Black Nickel Effect **1682R/Size**



Stud (Shown in Spun Brass)
Stainless Steel Effect **7103R/Size**
Spun Brass Effect **7105R/Size**
Chrome Effect **1663R/Size**
Black Nickel Effect **1681R/Size**



Trumpet (Shown in Chrome)
Stainless Steel Effect **7109R/Size**
Spun Brass Effect **7111R/Size**
Chrome Effect **1665R/Size**
Black Nickel Effect **1683R/Size**



Ball (Shown in Stainless Steel)
Stainless Steel Effect **1606R/Size**
Spun Brass Effect **1607R/Size**
Chrome Effect **2155R/Size**
Black Nickel Effect **2175R/Size**

Bullet (Shown in Chrome)
Stainless Steel Effect **1602R/Size**
Spun Brass Effect **1603R/Size**
Chrome Effect **2153R/Size**
Black Nickel Effect **2173R/Size**

Size (cm)			
120	180	240	300

Stud (Shown in Black Nickel)
Stainless Steel Effect **1600R/Size**
Spun Brass Effect **1601R/Size**
Chrome Effect **2152R/Size**
Black Nickel Effect **2172R/Size**

Trumpet (Shown in Spun Brass)
Stainless Steel Effect **1604R/Size**
Spun Brass Effect **1605R/Size**
Chrome Effect **2154R/Size**
Black Nickel Effect **2174R/Size**

28mm

COMPLETE PACK
Comes with Extendable
Cup Bracket



28mm pole suitable for light and medium weight curtains up to 11kgs.

35mm COMPLETE PACK



Ball (Shown in Black Nickel)
 Stainless Steel Effect 2195R/Size
 Spun Brass Effect 2503R/Size
 Chrome Effect 2520R/Size
 Black Nickel Effect 2547R/Size

28mm EYELET POLE COMPLETE PACK

A 28mm complete pole pack without the rings to allow for an eyelet curtain heading. The bracket is an extendable cup with up to 155mm extension from wall to allow for depth of heading.

Comes with Cylinder Bracket



Bullet (Shown in Spun Brass)
 Stainless Steel Effect 2193R/Size
 Spun Brass Effect 2501R/Size
 Chrome Effect 2518R/Size
 Black Nickel Effect 2545R/Size

Size (cm)			
120	180	240	300

300cm pole comes in two pieces that are joined together with a connector (supplied in the pack).



Bullet

Stainless Steel Effect 1629R/Size
 Spun Brass Effect 1630R/Size
 Chrome Effect 2156R/Size
 Black Nickel Effect 2176R/Size



Ball

Stainless Steel Effect 1631R/Size
 Spun Brass Effect 1632R/Size
 Chrome Effect 2151R/Size
 Black Nickel Effect 2171R/Size

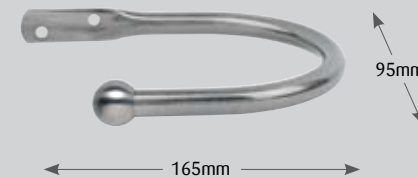


128mm to 155mm fully extended



Stud (Shown in Stainless Steel)
 Stainless Steel Effect 2192R/Size
 Spun Brass Effect 2500R/Size
 Chrome Effect 2517R/Size
 Black Nickel Effect 2544R/Size

HOLDBACKS (SINGLE) - Finish off the look with a co-ordinating hold back.



Ball (same size for all) projection 95mm

Stainless Steel Effect 7331R
 Spun Brass Effect 7333R
 Chrome Effect 1666R
 Black Nickel Effect 1684R



Size (cm)				
120	180	240	300	360

PACK CONTENTS FOR ALL POLE DIAMETERS

Pole Size	Size (cm)				
	120cm	180cm	240cm	300cm	360cm*
Poles	1	1	1	2	2
Joining Piece				1	1
Brackets	2	2	2	3	3
Rings**	12	18	24	30	36
Finials	2	2	2	2	2

*360cm pole only available in 35mm diameter

**Rings not contained in eyelet pole pack



35mm Suitable for light, medium and heavy weight curtains 11kgs and over.

Trumpet (Shown in Chrome)
 Stainless Steel Effect 2194R/Size
 Spun Brass Effect 2502R/Size
 Chrome Effect 2519R/Size
 Black Nickel Effect 2546R/Size

NEO COMPONENT RANGE

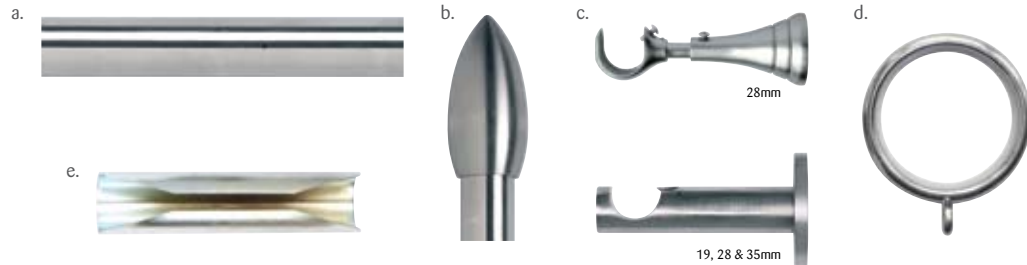
NEO WORKS WITH MOST WINDOW SHAPES AND SIZES INCLUDING BAYS AND RECESSES. IF YOU WANT SOMETHING DIFFERENT TO THE COMPLETE PACK YOU CAN MAKE YOUR OWN FROM COMPONENTS...

SINGLE POLE - Need to fix a wider window span? Prefer the cylinder bracket to the extendable 28mm bracket? Shown in 28mm Stainless Steel Effect with extendable Cup Bracket with Ball finial.



WALL FIXED - There are two types of wall bracket: the cylinder bracket and the 28mm only extendable cup bracket. Both are suitable as side or centre brackets.

Item	You will need:
a. Pole	Depends on window size. Single poles come in lengths of 120/150/180/240cm. For longer lengths two poles can be joined to make spans of up to 480cm.
b. Finials	1 pair
c. Brackets	2 brackets for single pole lengths, otherwise 3.
d. Rings	1 ring per 10cm
e. Joiner	If joining two poles together



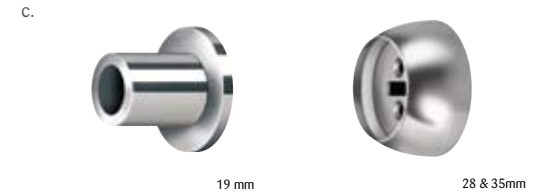
CEILING FIXED - Use a ceiling bracket where there is limited space above the window or where the wall is weak.

As Wall Fixed but use Ceiling Bracket(s) (see table at back for coding)



RECESS FIXED - Enables pole to be fixed between walls, or to a side wall at one side.

As Wall Fixed but 1 recess bracket at each end. Centre bracket dependent on pole length.



19/28MM DOUBLE POLE

A double layer of curtains can be used for extra privacy, light filtering, warmth or simply for effect. A 28mm pole hangs at the front with a 19mm pole at the back. Used on straight windows.



Item	You will need:
a. Pole	19mm pole & 28mm pole. Quantity depends on window size. Single poles come in lengths of 120/150/180/240cm. For longer lengths two poles can be joined to make spans of up to 480cm.
b. Finials	1 x 19mm pair (suggest 'Stud'), 1 x 28mm pair
c. Brackets	2/3 Double Brackets dependent on pole length
d. Rings	1 ring per 10cm
e. Joiner	If joining two poles together



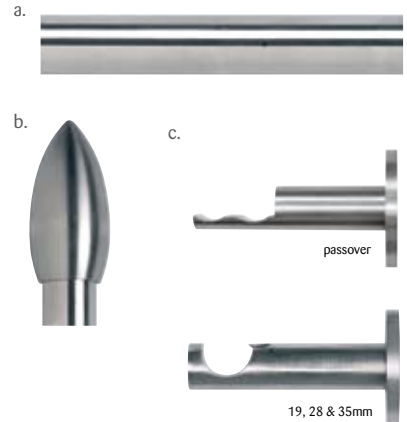
BAY WINDOWS

Corner elbow joints, passing brackets and passing rings can be used to fit Neo to bay windows. As the corner joint is an 'elbow' design the curtain will need to be helped around it. Suitable for 2 bend bays; fixes to wall.



Works with 2 bend bays with up to 60° bends

Item	You will need:
a. Pole	Dependent on bay width. Single poles come in lengths of 120/150/180/240cm. Poles will need to be cut to size and joined at corner joints and in the centre.
b. Finials	1 pair
c. Brackets	4 Passover (one either side of corner joint). Used with the passing rings to allow the curtain to run past the brackets. 3 Wall brackets (2 at each side and 1 centre)
d. Rings	'C' Passing Rings. Passing Rings - 1 ring per 10cm. Allow the curtains to pass over the brackets.
e. Joiner	If joining two poles together



ORDERING COMPONENTS

Components: Follow the 'You will Need' guide. The catalogue numbers are overleaf. Here's an example: "I want to order a 28mm, Stainless Steel pole for a bay window. The window measures 3 metres."

Step 1: The Pole

Select pole diameter & finish. When taking note of code add length of pole(s) required to item code.

Chosen Style	Catalogue Number	Quantity Needed
28mm, Stainless Steel Finish, 3m	2130R/150	2

Step 2: Finials

Select finial designs & finish.

Chosen Style	Catalogue Number	Quantity Needed
Ball Finials, 28mm, Stainless Steel Finish	2131R	pair

Step 3: Brackets

Select brackets & finish.

Chosen Style	Catalogue Number	Quantity Needed
Passover Brackets, 28mm, Stainless Steel Finish	1622R	4
Wall Brackets, 28mm cup, Stainless Steel Finish	1618R	3

Step 4: Rings

Select rings & finish.

Chosen Style	Catalogue Number	Quantity Needed
C Rings, 28mm, Stainless Steel Finish	1620R	5 Packs

Step 5: Joiner

Select joiner & finish.

Chosen Style	Catalogue Number	Quantity Needed
Joiner, 28mm, Stainless Steel Finish	2135R	1

Step 6: Corner Joints

Select corner joints & finish.

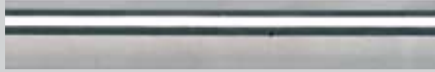
Chosen Style	Catalogue Number	Quantity Needed
Bay Corner Joints, 28mm, Stainless Steel Finish	1610R	2

Step 7: Holdbacks

Select holdbacks & finish.

Chosen Style	Catalogue Number	Quantity Needed
Holdbacks, Stainless Steel Finish	7331R	2

POLE ONLY



Pole Length (cm)				
120	180	240	300	500

Pole Size	120cm	150cm	180cm	240cm	300cm	360cm	480cm	500cm*
Component Pole Lengths	1 x 120	1 x 150	1 x 180	1 x 240	2 x 150	2 x 180	2 x 240	1 x 500
Joining Piece Needed					Yes	Yes	Yes	
Brackets Needed	2	2	2	2	3	3	3	
Packs of Rings (6 per pack, 10 rings per metre)	2	3	3	4	5	6	8	

* This is a contract length designed to be cut down to size. It is available in stainless steel only.

19mm Pole Only		28mm Pole Only		35mm Pole Only	
Stainless Steel Effect	1650R/size	Stainless Steel Effect	2130R/size	Stainless Steel Effect	2219R/size
Spun Brass Effect	1656R/size	Spun Brass Effect	2136R/size	Spun Brass Effect	2511R/size
Black Nickel Effect	2121R/size	Black Nickel Effect	2186R/size	Black Nickel Effect	2555R/size
Chrome	1674R/size	Chrome	2166R/size	Chrome	2538R/size

FINIAL ONLY (pair)



19mm Finial Only	19mm Ball (length 29mm)	19mm Bullet (length 57mm)	19mm Stud (length 26mm)	19mm Trumpet (length 47mm)			
Stainless Steel Effect	1651R	Stainless Steel Effect	1653R	Stainless Steel Effect	1652R	Stainless Steel Effect	1654R
Spun Brass Effect	1657R	Spun Brass Effect	1655R	Spun Brass Effect	1658R	Spun Brass Effect	1660R
Black Nickel Effect	2126R	Black Nickel Effect	2129R	Black Nickel Effect	2127R	Black Nickel Effect	2128R
Chrome	1675R	Chrome	1677R	Chrome	1676R	Chrome	1678R

28mm Finial Only	28mm Ball (length 87mm)	28mm Bullet (length 91mm)	28mm Stud (length 34mm)	28mm Trumpet (length 63mm)			
Stainless Steel Effect	2131R	Stainless Steel Effect	2133R	Stainless Steel Effect	2132R	Stainless Steel Effect	2134R
Spun Brass Effect	2137R	Spun Brass Effect	2139R	Spun Brass Effect	2138R	Spun Brass Effect	2140R
Black Nickel Effect	2187R	Black Nickel Effect	2189R	Black Nickel Effect	2188R	Black Nickel Effect	2190R
Chrome	2167R	Chrome	2168R	Chrome	2169R	Chrome	2170R

35mm Finial Only	35mm Ball (length 105mm)	35mm Bullet (length 91mm)	35mm Stud (length 34mm)	35mm Trumpet (length 63mm)			
Stainless Steel Effect	2266R	Stainless Steel Effect	2268R	Stainless Steel Effect	2267R	Stainless Steel Effect	2269R
Spun Brass Effect	2512R	Spun Brass Effect	2514R	Spun Brass Effect	2513R	Spun Brass Effect	2515R
Black Nickel Effect	2556R	Black Nickel Effect	2557R	Black Nickel Effect	2558R	Black Nickel Effect	2559R
Chrome	2542R	Chrome	2543R	Chrome	2540R	Chrome	2541R

BRACKETS ONLY

Cylinder Brackets (single)



19mm cylinder bracket (projection 92mm) (backplate diameter 44mm)	28mm cylinder bracket (projection 122mm) (backplate diameter 63mm)	35mm cylinder bracket (projection 122mm) (backplate diameter 63mm)			
Stainless Steel Effect	7337R	Stainless Steel Effect	1612R	Stainless Steel Effect	2198R
Spun Brass Effect	7339R	Spun Brass Effect	1613R	Spun Brass Effect	2506R
Black Nickel Effect	1686R	Black Nickel Effect	2179R	Black Nickel Effect	2550R
Chrome	1668R	Chrome	2159R	Chrome	2523R

Cup Brackets (single)



28mm cup bracket (projection 128 - 155mm) (backplate diameter 50mm)	
Stainless Steel Effect	1618R
Spun Brass Effect	1619R
Black Nickel Effect	2182R
Chrome	2162R

Passover Bracket (single)



19mm (projection 74mm) (backplate diameter 44mm)	28mm (projection 114mm) (backplate diameter 60mm)	35mm (projection 110mm) (backplate diameter 64mm)			
Stainless Steel Effect	7347R	Stainless Steel Effect	1622R	Stainless Steel Effect	2210R
Spun Brass Effect	7348R	Spun Brass Effect	1623R	Spun Brass Effect	2509R
Black Nickel Effect	1690R	Black Nickel Effect	2184R	Black Nickel Effect	2553R
Chrome	1672R	Chrome	2164R	Chrome	2536R

Double Brackets (single)



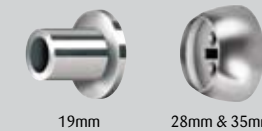
19/28mm (projection 138mm) (backplate diameter 64mm)	
Stainless Steel Effect	1616R
Spun Brass Effect	1617R
Black Nickel Effect	2181R
Chrome	2161R

Ceiling Bracket (single)



19mm (projection 72mm) (backplate diameter 43mm)	28mm (projection 77mm) (backplate diameter 43mm)	35mm (projection 83mm) (backplate diameter 44mm)			
Stainless Steel Effect	1624R	Stainless Steel Effect	1626R	Stainless Steel Effect	2211R
Spun Brass Effect	1625R	Spun Brass Effect	1627R	Spun Brass Effect	2510R
Black Nickel Effect	2120R	Black Nickel Effect	2185R	Black Nickel Effect	2554R
Chrome	1673R	Chrome	2165R	Chrome	2537R

Recess Brackets (pair)



19mm (projection 30mm) (backplate diameter 35mm)	28mm (projection 24mm) (backplate diameter 42mm)	35mm (projection 24mm) (backplate diameter 50mm)			
Stainless Steel Effect	7343R	Stainless Steel Effect	1614R	Stainless Steel Effect	2199R
Spun Brass Effect	7344R	Spun Brass Effect	1615R	Spun Brass Effect	2507R
Black Nickel Effect	1688R	Black Nickel Effect	2180R	Black Nickel Effect	2551R
Chrome	1670R	Chrome	2160R	Chrome	2141R